



[NWOS Home](#)

[Current Newsletter](#)

[News Archive](#)

[Upcoming Events](#)

[Volunteer Opportunities](#)

[Advertising](#)

[NWOS Library](#)

[NWOS Contacts](#)

[NWOS Membership](#)

Want something printed in the newsletter? E-mail it to [nwos\\_news@nwos.org](mailto:nwos_news@nwos.org) no later than the 25th of the month.



## January 2020

Volume 73, Issue 1

- [About the January Meeting](#)
- [January Meeting Program: Food, Sex & Alcohol: The Fascinating World of Orchid Pollination](#)
- ["A Quiet Place"](#)
- [What will I be doing at the Flower Show?](#)
- [Prepping Your Orchids for the NW Flower & Garden Festival](#)
- [Remembering Ken Myrabo](#)
- [Membership Renewal Reminder](#)
- [January: The Month of Vision Looking Ahead to a New Year of Success](#)
- [2020 January AOS Corner](#)
- [Report from the December Meeting](#)
- [Schedule of Upcoming Events](#)
- [Reminder for Officers & Board Members](#)
- [NWOS/Amazon Shopping Link](#)
- [NWOS Website Links](#)
- [Special Announcements](#)

### About the January Meeting

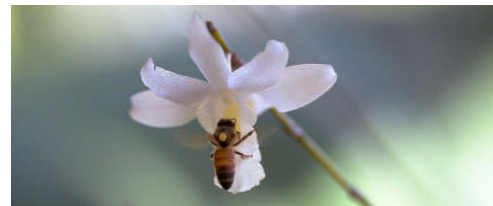
January 13, 2020

7:00 p.m.

University of Washington Center for Urban Horticulture

3501 NE 41st Street

Seattle, WA 98105



Orchid Pollination

### Orchid Basics

We will continue our series of **Orchid Basics** next month.

### January Meeting Program: Food, Sex & Alcohol: The Fascinating World of Orchid Pollination

Our previously scheduled program had to be canceled at the last minute. We will present an American Orchid Society web video. Join us for a fascinating talk on orchid pollination strategies by Dr. Ron McHatton, Director of Education of the American Orchid Society.

#### Display Table:

Bring your blooming Orchids so everyone can enjoy them. For your convenience, you can print out a Plant Table Information Form ahead of time. Click for your version of choice: [PDF](#) [WORD](#) [Excel](#)

#### Sales Table:

Members may bring up to 10 plants to sell. Include an extra tag with your name and the price in the plant.

#### Raffle:

The raffle will be held as usual. Win a new orchid for your collection while supporting the Scholarship Fund. If you have any extra Orchids, please consider donating them to the raffle.

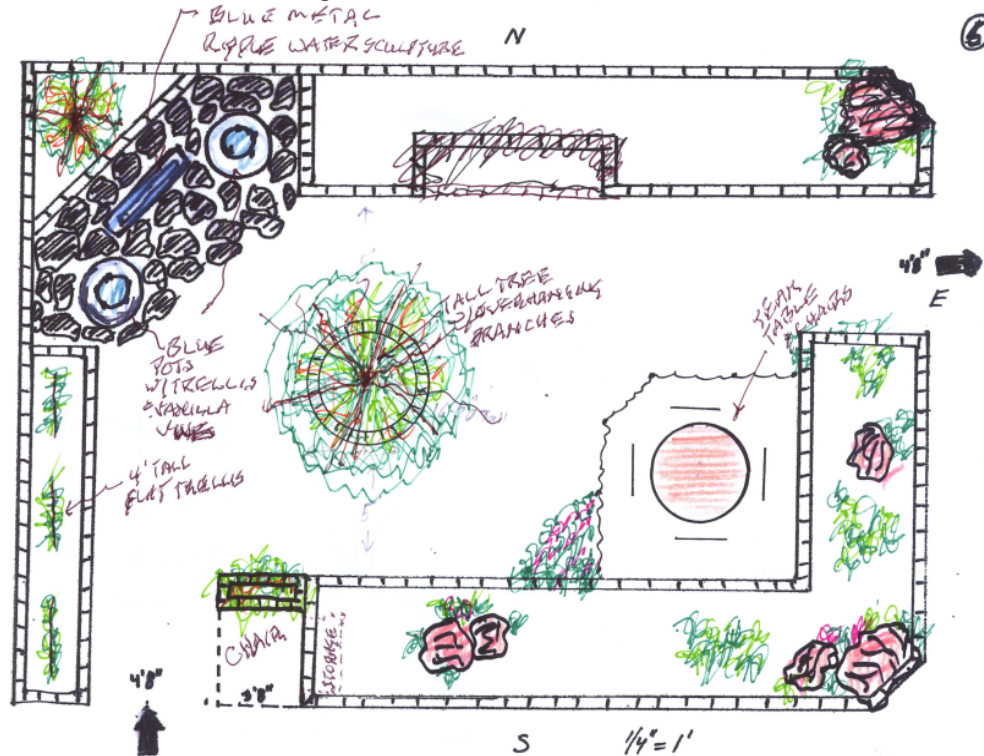
#### NWOS Library:

If you'd like to check out a book or tape from our Library, please contact our Librarian [Joe Grienauser](#) a minimum of 2 weeks before the next meeting. Besides email, you can give Joe your request at any meeting. For a list of library items Click on the Library link at the top left of this page or click [HERE](#).

## "A Quiet Place"

In six short weeks we will begin building our orchid garden at the Washington State Convention Center in downtown Seattle. The NW Flower & Garden Festival is upon us once again! This will be our 15th year putting in a garden on the Show floor.

Our 880 square foot garden is located in the center of the Convention Hall. Joe Griener, Gordon Cromwell and myself have been working out the details and placing orders for the materials we will use. This will be another walk-through garden. Our garden's centerpiece will be a 32-inch tall x 60-inch diameter firepit/planter containing a tall tree or two from which to hang mounted orchids. We plan to build this up so the Public can safely walk beneath this tree while admiring its orchid "ornaments".



Large stones will be placed on the two cut-off corners and these stones will be repeated elsewhere within the planting beds. The granite cobble/bricks we used last year will be used to build our short walls this year. What prompted the change from November's newsletter? Our rock supplier told us they didn't have enough of a particular wall stone from which we had planned to build a 3-foot tall wall all around our garden. So we opted to build a much shorter 20-inch wall with the more plentiful granite cobble, which we used last year. Another change is the Show management required that all gardens have some kind of flooring material that is not the Convention Center floor. And another reason - we're not getting younger. The fewer heavy items we each have to lift into place, and later remove, the better.

There will be one chair to the side of the garden's entrance for a member to sit upon and engage the Public as they walk through. Hidden storage for coats/hats will be near that chair but storage will be minimal. As such we are asking volunteers to make use of the nearby Coat Check stations to store their belongings and purchases.

### ORCHIDS NEEDED ON SUNDAY, FEB 23

We are asking everyone to bring their blooming (and labeled) orchids by 5:00 pm on Sunday, February 23, to be included in the garden. If you need to make other arrangements for getting your orchids to the Convention Center on Sunday, please contact Joff Morgan (contact number and email are in the NWOS Roster).

We are doing this mainly to get a better idea of the color palette we have to play with before the orchids are installed on Monday. This will also give us ample time to group the plants by color and for the label-makers to label plants and check that your pots have the owner's name on them. Don't forget that all important LIST of plants, as we need that to assist us during teardown.

In years past, orchids would arrive on Monday, at all hours, and it was always a frenzy to place each plant into its appropriate place before the night was over. Then just as we were

finishing up more orchids would appear and cause much frustration as we often had to rearrange areas. Having the orchids arrive on Sunday will (hopefully) reduce this and allow us time to figure out where all plants go to best show them off to the Public.

Another advantage of the orchids arriving on Sunday is there will be minimal competition for Convention Center carts at the Hand-Carried Freight Elevator in the parking garage, as the booth vendors will not have begun moving in yet. Plus with it being Sunday, there should be less traffic overall getting to/from the Convention Center and I believe street parking is free that day too!

### **Important Dates**

=====

**SAT Feb 22 through TUE Feb 25 .. Setup**

**WED Feb 26 through SUN Mar 1 .. Show open to the Public**

**MON Mar 2 .. Teardown and Cleanup**

So please sign-up to be a volunteer at this Show. Wristbands and Setup work passes should be available at the February meeting. If you're not able to make that meeting, let me know on the signup sheet and I will MAIL your items to the address on file in the Roster.

We look forward to a great turnout of volunteers and your gorgeous orchids this year!

~ Joff Morgan, NWF&G Festival committee

---

### **What will I be doing at the Flower Show?**

Our orchid garden "A Quiet Place" is scheduled to be built on Saturday, Feb 22 and completed by noon on Tuesday, Feb 25. The Show opens Wednesday, Feb 26 and closes 6 pm on Sunday, Mar 1. Then we have a day (Monday, Mar 2) to remove all of the materials and sweep up.

Any questions, please see Gordon Cromwell or Joff Morgan.

- Joff Morgan, NWF&G Festival committee

#### **Saturday, Feb 22**

- depending on when we can begin "move in", there may be lots of standing around as we often have to clear our garden space of vehicles and materials from other gardens

- we will begin by measuring and setting chalk lines of the various garden areas
- granite cobble bricks will be cleaned of dust/debris by dunking in water first
- you will want gloves for this and probably some knee pads or mats to kneel on
- a 3' x 15' planter will be built using granite cobble on SW corner
- pavers and bricks will be gently laid down in a specific pattern as our flooring
- electric extension cord run from power box along floor to firepit/planter
- 2-3 milk crates on side will be set in area marked 'storage'
- granite cobble will be laid down wherever there are walls for our planting beds
- large heavy rock will be set along the cutoff NE and SE corners (w/help from forklift)
- pallets from pavers, bricks, and granite will be placed flat within the planters
- pallets will be covered with cardboard and plastic sheeting
- planters will be filled with sawdust and mounds made to give differing heights
- firepit/planter in center will be built
- water sculpture and ceramic blue pots will be placed
- trellises placed within blue pots and backfilled with sawdust
- slate pieces will be washed of debris and placed around the sculpture and pots

Granite cobble (walls) = 20# each

Summit concrete pavers (flooring) = 18# - 36# each

Charcoal concrete bricks (floor edging) = 3# each

Firepit concrete blocks = 10# - 20# each

#### **Sunday, Feb 23**

- tables and multi-shelf carts will be set around perimeter for YOUR orchids
- orchid pots need to be labeled with your name on blue painter's tape (stays on when wet)

- orchids need to be accompanied with a printed list to assist us with teardown on Mar 1
- foliage from the Woodland Park Zoo arrives at 11
- foliage plants are placed (not buried) into sawdust
- water sculpture is filled with water and turned on
- uprights and spots are installed in firepit and elsewhere to highlight plantings
- assist label-makers with labeling orchids
- remainder of heavy rock is placed in the planters (with assist from forklift)
- tall trees installed into firepit and backfilled with sawdust (not buried)

#### **Monday, Feb 24**

- orchids are labeled and grouped by color
- orchids are placed (not buried) into sawdust according to designers layout
- large mounted orchids are attached to tree trunks
- smaller mounted orchids are attached to trellises and hung on walls
- groupings (3-5) of similar colored flowers are placed acc to designers
- once plants are placed, a layer of dark mulch is laid down
- once we're sure everything is as it should be, moss over the entire garden to hide pots
- sweep garden flooring, sweep / whisk the wall stones and large rocks
- dismantle tables (to Joff's vehicle), wheel shelving to Joe's booth
- clean up area

#### **Tuesday, Feb 25**

- lightly mist entire garden
- continue clean up and put finishing touches on garden
- sprinkle Sluggo on moss
- garden must be completed and everyone off Show floor by Noon

#### **Wednesday, Feb 26 - 9am to 8pm**

#### **Thursday, Feb 27 - 9am to 8pm**

#### **Friday, Feb 28 - 9am to 8pm**

#### **Saturday, Feb 29 - 9am to 8pm**

#### **Sunday, Mar 1 - 9am to 6pm**

- store your coats/hats/purchases with Coat Check in main lobby or skybridge
- minimal storage of items within our garden this year
- either sit in supplied chair at garden entry and engage people as they walk in
- or wander around and within the garden answering orchid and society questions
- hand out our flyer which will have Society information, our upcoming March auction, etc
- if you're unsure of an answer, there will be other more experienced members to refer to
- SMILE and engage people, offer to answer questions
- if you're squeamish about talking to people, best to volunteer during Setup or Teardown
- provide security for our beloved plants (don't touch, sniffing is okay)
- and most importantly, don't sit on the walls, rocks and firepit

#### **Sunday, Mar 1 - 6pm to 9pm**

- setup tables around perimeter (from Joff's and Grantham's vehicles)
- remove orchids and group by the owner (from the lists they supplied)
- remove moss and bag it for pick up by the Zoo
- remove foliage plants and group together for pick up by the Zoo
- extract the pallets from underneath the sawdust in the planters
- set granite cobble (walls) on pallets and whisk them so it's relatively clean
- set concrete floor pavers on pallets
- set concrete bricks on its own pallet
- set firepit blocks on its own pallet

#### **Monday, Mar 2 - 8am to 2pm**

- drain water sculpture into floor drain, by reversing pump flow
  - help Gordon load sculpture, teak table/chairs, ceramic pots
  - help load foliage onto Zoo vehicles at 11am
  - set slate pieces onto its own pallet
  - shrinkwrap the concrete floor pavers, concrete bricks and concrete firepit blocks
  - Joe will have a crew load the paver, brick and block pallets for transport to Tacoma
  - clean up as needed
-

## Prepping Your Orchids for the NW Flower & Garden Festival

Here's what to do to prepare your orchids for the Flower Show. Or any show for that matter.

### Check for Pests and Diseases

Check both sides of the leaves, look into the crevices of leaves and pseudobulbs, the front and back of flowers, underneath the pseudobulb sheathing, and in and around the pot or mount. No one wants extra hitch-hikers (slugs, snails, aphids, mites, scale or worse!) to return with our precious babies. The same goes for any bacterial, fungal, or viral diseases. If you are in doubt, don't send it. Any questionable items found on your plants during Setup, they will not be displayed.

### Clean the Plants

Gently run a soft, damp cloth over and under the leaves. Trim any burned leaf tips. Trim the dried sheathing. Just generally make the plant look healthy and pretty. Be sure your cutting tools are sterilized between plants to reduce the chance of transmitting a disease or virus.

Water Thoroughly

We will be misting the plants and the surrounding mosses that blanket the garden in the morning of each Show day to help keep them fresh. However, the Convention Center environment is very drying and is hard on many flowering ornamentals including our orchids.

- And people too, so keep hydrated when volunteering.

### Stake any wobbly flower stalks

Any rambling, wobbly, or long inflorescences should be staked to prevent damage during transport to the Show.

### Label the Pots and back of Mounts

Put your name on a piece of blue Painters tape (it doesn't peel off when it gets wet) or use those address labels that various charities send you, and put your name on the side or bottom of the orchid pot (or both). With the printed list, these labels help us identify the orchid as belonging to you when we dismantle the Show on Sunday evening.

If your orchid has to be in a cache pot, then be sure to label that pot as well.

Otherwise, *don't send the cache pot*. All orchid pots within our garden will be disguised with "live" moss. One of the Flower Show rules is -- no pots can be visible. We have to create the *illusion* of an established garden, without visible pots.

### Make a Printed List

- Include your name, address, phone, and email
- List each plant name on its own line. Please PRINT or do it on the computer.
- Specify whether you will be picking up the plants at Show's end on Sunday, March 1? Or do they go home with someone else and you'll pick them up later?

Keep in mind if you opt for picking your plants up later, our next meeting (the Auction) is two weeks after this Show ends (March 16). Another option, depending on your orchids health, would be to send them on to the Mt Baker orchid show which is the following weekend (March 7 & 8, setup March 6).

### Label Your Boxes and Trays

We want to be sure that any boxes or trays you used for delivery actually go back home to you. So label these items in BOLD with a permanent marker or plaster them with address labels.

~ Joff Morgan, NWF&G Festival committee



---

## Remembering Ken Myrabo

Sadly, an avid member of our society, Ken Myrabo, recently passed away. Many of you knew Ken, who actually met his wife Anne Devine at one of our meetings back in the early 1990's. Anne shared this lovely tribute for those of you who knew and cared for him.

<https://funerals.coop/obituaries/kenneth-arnold-myrabo.html>

A celebration of Ken's life will be held on Sunday, January 19, 2020 at the Center for Urban Horticulture in Seattle, 1:30 – 3:30 p.m., with the service beginning at 2:00 p.m.

Our sincere condolences go out to Anne, his two daughters, family and friends.



---

## Membership Renewal Reminder

It's time to renew your NWOS membership for 2020. Our membership period now goes by calendar year (Jan. 1 to Dec. 31). You can pay at most meetings by cash, check, or debit/credit card. Click [HERE](#) to pay online using Paypal on our Membership page. You can mail a check (payable to NWOS) to PO Box 51021, Seattle, WA 98115-1021. New members should complete the [Membership Form](#).

Dues are \$30 for one person or \$40 for two people at the same address. We also have a Youth membership of \$15 for one person aged 22 or under. Dues are kept low to encourage membership but they cover only a small portion of the society's expenses.

Each single, dual and youth membership person will be considered an individual full-fledged member entitled to all privileges and benefits of the society (voting, Christmas plants, sell plants at meetings/shows/auction, members-only summer BBQ, etc.).

Please contact [Mike Cory](#) for questions about your dues.

---

## January: The Month of Vision Looking Ahead to a New Year of Success

By Thomas Mirenda

Can you believe it is already January again? All of us are yet another year older and wiser. I like to believe that, just like that old ad campaign, "We're not getting older, we're getting better," but my morning mirror disproves that on a daily basis. Nonetheless, there is something to be said for aging. We do get better at some things with experience, and orchid growing is certainly one of those things. You may not realize it, but just from reading this magazine regularly, you gain significantly. Even if you cannot invest in state-of-the-art greenhouses or the latest innovations, your awareness about the needs of orchids, gleaned from *Orchids*, has influenced you and improved your growing skills. Although it is fairly arbitrary, I find it is always at this time of year we attempt to reflect and take stock of our collections, our growing skill and our knowledge. We all share the goal of aspiring to grow our plants even better in the coming year. This, of course, requires "vision." Aside from actually seeing the beauty of our orchids, if you look up vision in a dictionary or thesaurus, you'll find some startling definitions and synonyms. Words such as "idea," "dream" and even "revelation" appear there. So I challenge you in 2013 to think big, to shoot for the stars. Come up with a vision for yourself as an orchid person for the coming year, for five years, or even for where you'll be in 10 or 20 years, and develop a strategy for reaching those goals.

Aside from your growing skills, think about how your enthusiasm for our beloved plants can best further the cause of other aspects of orchidology, such as conservation, education, technology and innovative cultivation techniques. Leave a legacy for those following in your footsteps. After all, wouldn't it be sad to not pass on all you've learned to others? We have all been gifted with the joy of orchids. Let's all spread that joy around the world this year.

**I SEE YOU** January is an exciting time in our collections. So many plants are in spike now and the anticipation of fattening buds' imminent opening and first blooms of many newly acquired species and hybrids can make each day a revelation in the coming months. Look around your collection carefully for inflorescences that may be hiding from your view or, if your benches are packed like mine, may be caught hiding amidst lush foliage. Make sure your developing spikes are growing unobstructed and receiving adequate light so that they

may display their natural grace upon blooming.

**MAKE A GOOD IMPRESSION** it is imperative to support developing spikes of many orchids, particularly phalaenopsis, cymbidiums and oncidium intergeneric hybrids. In the wild, epiphytic orchids tend to have pendent or cascading inflorescences, but unless your plants are mounted or in hanging baskets, this does not work well for most cultivated plants. In particular, spikes of hybrids that bear larger flowers or higher flower count than the species may be especially heavy and stressed by the time they are fully open. This also makes for the best presentation of your plants for the upcoming flower show season. Good presentation is the first step toward winning blue ribbons and AOS awards.

**MOISTURE MATTERS** the old adage “sometimes less is more” is true with orchids this time of year. With the shorter day lengths, cooler temperatures and generally overcast conditions so prevalent in winter, most orchids require far less water than they did in the summer growing season. Commonly grown genera such as Cattleya, Phalaenopsis and Paphiopedilum have matured their summer growth, and should be watered less frequently now. Some genera, especially Catasetum, Galeandra, Habenaria, Dendrobium and Lycaste, are truly “sleeping” now and can actually rot if watered excessively, or, in some cases, even just a little. You must determine which plants will suffer with even an occasional watering in winter, and segregate them to an area where they will not be hit with a stray, inadvertent pass of the watering wand. Despite the need for dryness, most orchids still do best in humid conditions. This becomes an important issue for those who grow in the home where humidity can be excessively low when radiators come on. Especially for the home grower, it is important to supplement humidity in winter with a humidifier, pebble tray or occasional misting.

*(As pertinent now, as it was then - Reprinted with permission ORCHIDS VOL. 82 NO. 1 JANUARY 2013)* Also visit the AOS website for a **Monthly Checklist on Orchid Care** <http://www.aos.org/orchids/seasonal-orchid-care/january-february-checklist.aspx>

— Tom Mirenda has been working professionally with orchids for over three decades. He is an AOS accredited judge and is the chairman of the American Orchid Society's Conservation Committee. He recently coauthored *The Book of Orchids: A life-size guide to 600 species from around the world.* (email: [biophilak@gmail.com](mailto:biophilak@gmail.com)). Tom is our next month's speaker.

---

## 2020 January AOS Corner

### REMINDERS about WEBINARS

To view **REGISTRATION is REQUIRED:** <http://www.aos.org/orchids/webinars.aspx>

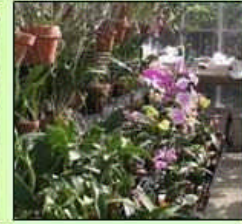
Cannot make it on the scheduled date or time? No need to worry. Register anyway!

We digitize the webinars and they are available to view at your leisure from the same webpage. Send your Greenhouse Chat questions and photos to: [greenhousechat@aos.org](mailto:greenhousechat@aos.org)

If you want to view independently from home, you can join live, either on your computer or by phone. ALL past webinars are recorded and indexed by topic, for future viewing.



# Webinars-Coming Attractions!



When	January 09, 2020 8:30pm EST Thursday	January 16, 2020 8:30pm EST Thursday	February 11, 2020 8:30pm EST Tuesday	February 18, 2020 8:30pm EST Tuesday
Topic	Orchid Travels in Peru	Greenhouse Chat (Orchid Q&A) <i>Send in your Questions!</i>	Large Flowered Cattleyas	Greenhouse Chat (Orchid Q&A) <i>Send in your Questions!</i>
Presenter	<b>Ken Jacobsen</b> Accredited AOS Judge	<b>Ron McHatton</b> Chief Education and Science Officer	<b>Art Chadwick</b> Founder Chadwick & Son Orchids Inc.	<b>Ron McHatton</b> Chief Education and Science Officer

The AOS wants you to know that they want to sweeten the deal and give you every possible reason to join AOS today! If you become an American Orchid Society member, you have considerably more resources available to help make orchid growing enjoyable and successful.

In December we mentioned the Reciprocal Garden Admission program. There's more where that came from! Besides a world-class monthly magazine, check out these added PERKS you receive as a member of the American Orchid Society:

### Purchase Discount Programs

- **5% discount** at select merchant partners on plants, supplies and more. Mention your AOS membership.
- **10% discount** on AOS publications purchased from the AOS. Members receive this discount on back issues of ORCHIDS magazine and AOS published books.
- **Reduced processing fees** for AOS judged awards. Members save \$20 on processing fees for each AOS award granted.
- **\$30 off an order of \$100** or more from select vendors with a two-year AOS membership.



American Orchid Society  
Education, Encouragement, Research

Thank you for joining/renewing  
your membership for two years

This coupon expires on:

**SAMPLE**

**\$30 OFF**  
YOUR ENTIRE RETAIL  
PURCHASE OF \$100  
OR MORE

This two sided coupon is issued to members renewing for two years

**USA**

**California**

- Gold Country Orchids  
300 Big Ben Rd., Union, CA 95948  
Tel: (530) 845-6600  
Web: goldcountryorchids.com

**Florida**

- Kroll-Smith  
255 W. Parker Rd., Apopka, FL 32712  
Tel: (407) 586-4354  
Web: krollsmith.com
- R.F. Orchids  
7400 W. 34th Ave., Homestead, FL 33030  
Tel: (305) 242-4532  
Web: rf-orchids.com
- Sonra Orchids Inc.  
NWS Store only  
2570 SW 77th Ave., Homestead, FL 33019  
Tel: (305) 247-2902
- OTC International  
1287 SW 32nd St., Miami, FL 33156  
Tel: (888) 631-4040  
Web: otc-usa.com

**Hawaii**

- Quail Orchids  
200 SW 49th St., Miami, FL 33125  
Tel: (305) 250-2888  
Web: quailorchids.net

**Hawaii**

- Carmela Orchids  
7459 Kaniho Rd., Makala, HI 96760  
Tel: (808) 880-8889  
Web: carmelorchids.net

**Illinois**

- Orchid Inn  
Note: By appointment only  
824 S. 13th St., Bloomington, IL 61709  
Tel: (309) 463-2386  
Web: orchidinn.com

**New Mexico**

- New Earth Orchids  
6203 Jaguar Dr., Santa Fe, NM 87507  
Tel: (505) 363-1028  
Web: newearthorchids.com

**Pennsylvania**

- Little Green Orchids  
25 Ridge Ave., Lancaster, PA 17602  
Tel: (717) 564-3000  
Web: littlegreenorchids.com

**South Carolina**

- Mountain View Orchids  
Near Store only, Gulf Pk  
800 Newberry St., Greenville, SC 29601  
Tel: (864) 322-0113

**Carroll and Holmes**

- Carroll and Holmes  
675 Newberry St., Greenville, SC 29606  
Tel: (864) 276-0276  
Web: carroll-and-holmes.com

**Online Only**

- Swift Orchids of Maui  
Tel: (808) 277-2555  
Web: swiftorchids.com
- Hillview Gardens  
Tel: (303) 629-9920  
Web: hillviewgardens.com
- Indoor Gardening Supplies  
Tel: (800) 673-3362  
Web: indoorgardensupplies.com
- Valley's Keeper Orchid Supplies  
Tel: (803) 673-2624  
Web: vkos.com
- Ravenhill (Canada only)  
Tel: (514) 374-8802  
Web: ravenhill.com
- Sunset Valley Orchids  
Tel: (916) 360-0176  
Web: sunsetvalleyorchids.com
- Tropics Garden Orchids  
Tel: (440) 471-0239  
Web: tropics.com



## Worth the Read - ORCHIDS Magazine January Preview

**For the Novice - Selecting New Plants** As a new orchid grower, who hasn't been stumped by trying to find a plant that will grow and thrive for you? The January article by Sue Bottom will give you pointers on things to look for to help you successfully grow a new acquisition.

This article presents a general overview of basic orchid selection by defining the difference between species and hybrids, seedlings and mericlones, diploids and tetraploids, and describes why you might choose one over the other. It explains the importance of plant tags and how they relate to the history of your new orchid. The educated grower will become a successful grower.

Coupled with archived information from the AOS Forum 1) [Beginners' Newsletters](#) and these tips from the AOS video library on 2) [Selecting an Orchid](#) and this 3) [Members Only Webinar](#), you have enough to get you started on building a healthy orchid collection.

- 1) <http://www.aos.org/all-about-orchids/beginners-newsletter.aspx>
- 2) <http://www.aos.org/orchids/aos-video-library/selecting-an-orchid.aspx>
- 3) <http://www.aos.org/all-about-orchids/webinars/public/best-plant.aspx>

### **Not a Novice? Membership offers something for everyone.**

Check out these additional articles:

- \* New Refugium Botanicum - *Dendrobium macrophyllum*
- \* Orchid Growing in a Retirement Community
- \* Orchids Illustrated - *Cypripedium* of North America
- \* One Hundred Years of Orchids - R.F. Orchids
- \* The Genus *Loefgrenianthus* and Alberto Löfgren
- \* Orchids of Bhutan - *Pholidota recurva*
- \* Book Review - Rankafu: Orchid Print Album

**LOOK** for your awarded orchids in the sixteen-page awards gallery in each issue of ORCHIDS! The magazine awards gallery features all of the awards granted month by month in the previous year.

**LOOK** on the AOS website to find the most recently awarded orchids! Exhibits are also included in the latest awards gallery. Check it out to get some great ideas for your next display. <https://secure.aos.org/orchid-awards.aspx>



Lycaste Reina Del Cisne 'Nikole'  
AM/AOS (80 points)  
*Lycaste angelae* x *Lycaste Kiama*

Award No: 20191481

Date: Nov 20, 2019

Event: Asociacion Altaverapacense de Orquideologia Show

Judging Center: Carolinas Judging Center

Exhibitor: Cesar Maaz Stwolinski

Photographer: Jorge Carlos

Cattleya jenmanii 'Terez' HCC/AOS (79 points)

Award No: 20194350

Date: Nov 16, 2019

Event: Northeast Center Monthly Judging

Judging Center: Northeast Judging Center

Exhibitor: Ken Reynolds

Photographer: Maurice Garvey



American Orchid Society Show Trophy 'Ode To Mario' ST/AOS (84 points)

Award No: 20196258

Date: Oct 26, 2019

Event: Windsor Orchid Society Show (Windsor, Ontario, Canada)

Judging Center: Toronto Judging Center

Exhibitor: Windsor Orchid Society

Photographer: Ed Cott

Thanks for meeting me down at the Corner!

*Eileen Hector*, AOS Corner - Affiliated Societies Newsletter Editor  
American Orchid Society, PO Box 565477, Miami, FL 33256-5477

## Report from the December Meeting

Abigail Chang, President, started by welcoming everyone, including new members and guests. She let everyone know how to find the newsletter online and that it's available to view at the meetings. Joff Morgan gave a report about the NW Flower & Garden Festival. She then introduced the new Officers and Board members and thanked those that are retiring.

Abigail explained about the two orchid trophy competitions and how we would vote for the winner. We then broke to enjoy a wonderful pot luck dinner. During dinner we looked at all the trophy contestants and voted for our favorite. We all then took our turn to select a plant from our Annual Holiday Plant Giveaway with plants provided by Emerald City Orchids.

Once the votes were counted, the winners of the two trophies were announced. Each were given a hearty round of applause. Abby then closed the meeting by passing the gavel to our new president, Joe Grienaer.



Photos: Diane Drisch





Abigail (far right) conducts her final meeting as President



Dinner time



full pot luck table



Deb White's  
Phalaenopsis cupcakes



Enjoying dinner with Mike Pearson's  
orchid slide show for entertainment on the screen



Part of the fun is being able to spend  
time chatting with our Orchid Friends



Picking a Rebecca Northen winner





Holiday gift plants



Perusing the holiday gift plants



Gift plants



Pondering a winner



Discussing who should win



Tallying the votes



Two of the evening's fashion statements:  
Erika finds a lovely color compliment to her outfit while  
Steve models the latest in Trophy headgear.



**Contestants for the Schoenfeld Trophy**  
This Trophy is awarded to the best blooming plant of any size



A long line of Schoenfeld contestants



more Schoenfeld contestants



Cyrtorchilum Juliann



Catatate





Psychopsis Mendenhall 'Hildos' AM/AOS



Laelia gouldiana, dark form



Encyclia (Prosthechea) radiatum



Bpl. Golden Peacock  
'Orange Beauty'



Cymbidium Gold Magic



pink cymbidium



Den. Spring Jewel 'Miki' AM/AOS



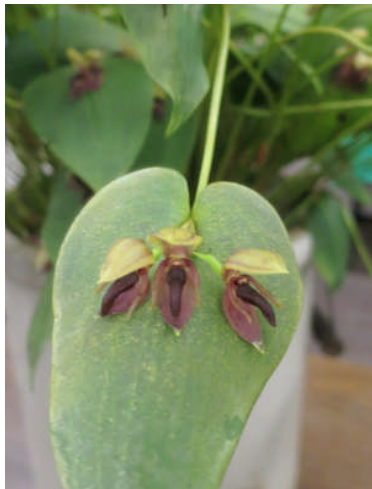
Dendrobium speciosum



Masdevallia princeps x Masd. ayabacana 4N



Miltoniopsis Lynn Waihee 'White Queen'



Pleurothallis linguifera





Monnierara Millenium Magic 'Witchcraft' AM/AOS



Paph. henryanum



Paphiopedilum wardii



Paphiopedilum helenae  
x Jolly Green Jem



Paph. Hsinying Citron 'C.H. #19  
x [9Hsinying Art Pie x Hsinying Citron  
'C.H. #6]] 'SM-TPS'



Paphiopedilum spicerianum



Paphiopedilum gratixianum



Cirropetalum (Bulbophyllum) Elizabeth Ann 'Buckleberry ' FCC/AOS



Schoenfeld winner Steve Dorsey with his Cirropetalum (Bulbophyllum) Elizabeth Ann 'Buckleberry ' FCC/AOS

### Contestants for The Rebecca T. Northen Miniature Orchid Trophy

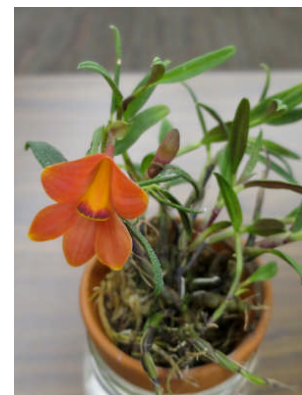
This Trophy is awarded to the best blooming plant that is 6 inches or less in height, excluding the bloom spike which can extend beyond the 6" limit for the foliage



Trisetella hoeijeri



Dendrobium cuthbertsonii 'Giant Pink' HCC/AOS x bicolor - Pink

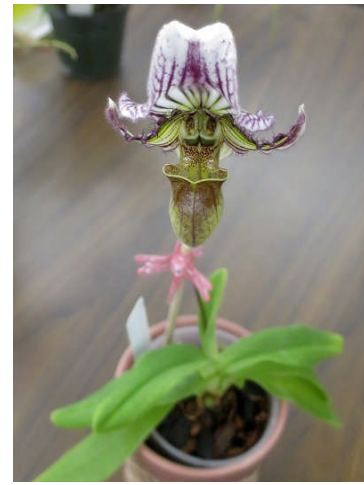


Dendrobium cuthbertsonii 'Giant Pink' HCC/AOS x bicolor





Paph. Little Trouble 'Album'



Paph fairriganum



Haraella retrocalla in a jar for humidity



Neolauchea pulchella



two of our members brought Medicalcar decoratum



Stellis species



Scaphosepaulum species



Dendrochilum





Phalaenopsis



Pleurothallis allenii



Masdevallia decumana



Ponera juncifolia



Masdevallia mejiana



Masdevallia glandulosa 'Lucke' x  
Masdevallia sanciae-inesae 1



Rebecca T. Northen winner Robert Culver with his Masdevallia sotoana

---

## Schedule of Upcoming Events

**January 13, 2020** - NWOS meeting - American Orchid Society Web Video: "Food, Sex & Alcohol: The Fascinating World of Orchid Pollination"

**January 20, 2020** - NWOS Show Committee Meeting - 7 p.m. at the Grantham's house. Contact Mike Foster if you're interested in helping out.

**February 10, 2020** - NWOS meeting - Speaker: Tom Mirenda: Orchid Gardens & Greenhouse Conservation. (see reprint above of his AOS article - *January: The Month of Vision Looking Ahead to a New Year of Success*)

**February 26 - March 1, 2020** - NW Flower & Garden Festival, with setup starting on 2/22

**SAT Feb 22 through TUE Feb 25 .. Setup**

**WED Feb 26 through SUN Mar 1 .. Show open to the Public**

**MON Mar 2 .. Teardown and Cleanup**

**March 9, 2020** - NWOS meeting - Annual Orchid Auction and Preview Party

**March 16, 2020** - Annual Hands ON Potting Clinic

**April 13, 2020** - NWOS meeting - Speaker: Bob Hamilton, topic TBA

**May 11, 2020** - NWOS meeting - Speaker: Bill Goldner, Woodstream Orchids, topic TBA

**June 8, 2020** - NWOS meeting - Annual midyear Potluck

**June 25-29, 2020** - National Native Orchid Symposium, Port Angeles, WA. There will be presentations on June 26 and 28 at the Port Angeles Senior Center and field trips on the 27th and 29th. <https://www.nativeorchidconference.info/annual-symposium.html>

**September 14, 2020** - NWOS meeting - Speaker: Sam Tsui, Orchid Inn, topic TBA.

**October 3&4, 2020** - Fall Show and Sale at VPC.

**October 12, 2020** - NWOS meeting - Speaker: Fred Clarke, Sunset Valley Orchids, topic TBA.

**November 9, 2020** - NWOS meeting - Speaker: Mary Gerritsen, topic TBA.

**December 14, 2020** - NWOS meeting - Holiday Potluck, Introduction of new Officers, and Orchid Awards

---

## Reminder for Officers & Board Members

The schedule of Board Meetings for this membership year is: 1/7/20, 3/3/20, 5/5/20, 7/xx/20, 9/8/20, 11/3??/20. Meet at 7 p.m. at Mike & Sheila Cory's house unless notified that it's been moved elsewhere.

---

## Shopping on Amazon? Use this link to Earn \$\$ for NWOS

If you go to <http://smile.amazon.com> and sign in to your account, you'll be given information about supporting various non-profits. You can type in "Northwest Orchid Society" and it will then send .5% of your purchase price to the organization.

It's really easy, but you have to remember to go in through the 'smile' subdomain when you place the order, otherwise it will go through as a regular order.

---

## NWOS Website Links

- Main website: <Http://www.nwos.org>
  - Events Calendar: <http://www.nwos.org/events>
  - Membership (including renewals): <http://newsletter.nwos.org/membership/>
  - Newsletter - Current Issue: <http://newsletter.nwos.org>
  - Newsletter - Back Issues: <http://nwos.orchid-society.net/archives/>
  - Show Information: <http://newsletter.nwos.org/ShowTime>
  - Facebook: <http://www.facebook.com/nworchidsociety>
- 

## Special Announcements



**HILLSVIEW GARDENS ANNUAL OPEN HOUSE  
SATURDAY JANUARY 11, 2020  
10 AM TO 4 PM**

**ENJOY SWEET AND SAVORY TREATS AND REFRESHMENTS  
ALONG WITH AN ARRAY OF BLOOMING AND BUDDED ORCHIDS**

**HILLSVIEW GARDENS (WILL & THERESA HILL)  
SPECIALTY ORCHIDS (BOB BURKEY & CASSANDRA PHILLIPS)  
GINES ORCHIDS (LEONARD GINES & LINDA EISENBERG)  
FEATURING GUEST VENDOR  
GRIFFIN MOUNTAIN ORCHIDS (PHIL & LIANA WEBB)**

Greenhouse location is at 13720 S. Mulino Road, Mulino, Oregon 97042

