



NORTHWEST ORCHID NEWS

Current Newsletter

February 2016

Volume 69, Issue 7

News Archive

Upcoming Events

Volunteer
Opportunities

Advertising

NWOS Library

NWOS Contacts

NWF&G SHOW 2015

Fall AOS SHOW 2015

Want something printed in the newsletter? E-mail it to nwos_news@nwos.org no later than the 25th of the month.

- [About the February Meeting](#)
- [Patricia A Harding: Name Changes and Taxonomy Rules](#)
- [Calling All Orchids](#)
- [Calling All Volunteers!](#)
- [NW Regional Judging - Jan. 16th](#)
- [Report from the January Meeting](#)
- [Schedule of Upcoming Events](#)
- [Reminder for Officers & Board Members](#)
- [NWOS/Amazon Shopping Link](#)
- [Special Announcements](#)

About the February Meeting

February 8, 2016

7:00 p.m.

University of Washington Center for Urban Horticulture
3501 NE 41st Street
Seattle, WA 98105

Patricia A. Harding: Name Changes and Taxonomy Rules

Have you ever wondered why your orchid's name has changed? Where have all the Schomburgkia's gone? Why is that pretty little cockleshell orchid now called Prosthechea cochleata, instead of Encyclia cochleata? In a very engaging way, Patricia will tell us all we ever wanted to know about the recent name changes and reclassifications in orchid nomenclature.

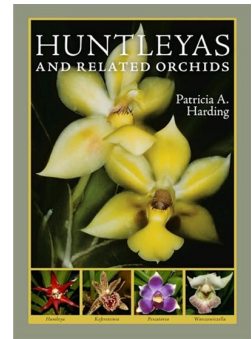
Patricia is retired from the workforce and now focuses on orchids, as a traveler, observer, photographer, and writer, with a little orchid growing on the side. When she's not traveling she lives in Oregon.



Patricia studied Botany as an undergraduate, but the economy at the time provided no jobs in Botany, so she became a medical doctor. She started growing orchids at age 21, killed them all, started again at 25, killed them all, and again at 30, but this time she started by going to orchid society meetings to learn how to do it. At the first meeting someone had a *Dendrobium thyrsiflorum* with three massive inflorescences. They had collected the plant years before and they were selling it because it was too big. Patricia sat on her hands and let the thing go to someone else for \$20, as she vowed not to buy an orchid till she knew how to grow them. She felt so frustrated by this that she never sat on her hands again, buying every orchid she reasonably could get her hands on. This led to one greenhouse, two and now three greenhouses and about 5000 plants and of those there are 1500 different species.

She retired from medicine ten years ago, and decided to return to Botany, especially the part of Botany she found the most fascinating--taxonomy. She started the AOS judging program in the PNW region and had the good fortune to meet with Carl Withner. She volunteered to help him with some "projects". The first project ended up being the book "The Debatable Epidendrums" covering a group of orchids Carl had loved and had ideas of how they should be segregated but had never put it to paper. Patricia's part was to put it to paper.

She learned a lot doing the book and enjoyed sorting out the problems such a book presents. She decided to do the next work on her own. She decided to study the *Huntleya* group, which includes *Pescatorea*, *Chondrorhyncha*, *Kefersteinia*, among others. The result is the book "Huntleyas and their Relatives" which was released November 2008.



Fall of 2010 saw the release of her Orchids of Brazil, Vol 1, Oncidiinae, with coauthor Dalton Baptista, the first in a series to cover all the species of orchids in Brazil. In between Vol. 1 and 2, she put Eric Christenson's files into a Maxillaria book. Along with writing books about orchids, she writes the occasional article for orchid magazines and in her travels she photographs orchids which seem to be all over the internet.

Patricia has been fortunate that as an AOS judge she has fallen into the small group of judges who judge international shows. This is not an elite group and it is surprising how few judges take advantage of these opportunities to judge internationally. Usually the cost to the judge is airfare and the rest is provided by the society so that the judge's in-country expenses are minimal. With a little effort one can arrange for some local people to take the judges to see orchids in their habitat, which is the part Patricia likes the best.

Patricia no longer buys orchid plants. She does take the occasional gift plant, but she now considers the greenhouses of collectors around the world as part of her own collection. Besides, her greenhouses are full.

Display Table:

Bring your blooming Orchids so everyone can enjoy them.

Sales Table:

Members may bring up to 10 plants to sell. Include an extra tag with your name and the price in the plant.

Raffle:

The raffle will be held as usual. Win a new orchid for your collection while supporting the Scholarship Fund.

NWOS Library:

If you'd like to check out a book or tape from our Library, please contact our Librarian [Caroline Mann](#) a minimum of 2 weeks before the next meeting. For a list of library items Click [HERE](#) or click on the link at the top of this page.

Calling All Orchids

The 2016 NW Flower & Garden Show is upon us! The time to show off your best, longest lasting blossoms is now! Stake those flower stems, polish those leaves, and label those pots. We need your blooming orchids to show off their stuff in "An Eruption of Orchids", our NWOS orchid garden designed by Joe Grienauer and Joff Morgan.

Here's what the www.gardenshow.com website has to say about our display:

From tropical settings to mighty volcanoes, this theatrical garden showcases the delicate beauty of its stars—large beautiful orchid specimens, all arranged to be admired individually.

You'll be taking a journey—passing through a fissure in an "active" volcano to see thriving orchids clinging to nooks and cracks in the walls. The short path leads to a lush setting where you're surrounded by beautiful flowers, then winding amidst large

tropical foliage plants to the outside world. And you don't have to worry about dodging lava flows—a water feature simulates lava flowing from the volcano crest!

The collaborative efforts of the Orchid Society Team have focused on displaying orchids in an outward direction for an intimate look at these beauties of nature.

"Take-home ideas" for your own garden: *Orchid varieties to grow in your home or greenhouse*

Well, okay, we're going to punt on the water feature part of our garden. But the lava flows should still look cool.

As you can see from the description, we have much to live up to! All blooming orchids (and even some of your non-bloomers) are needed to help fill this *995 square foot* garden. NWOS volunteers will be busy laying the garden's wood foundation and building a two-foot knee wall of stone around the Volcano on Saturday 2/13. Creating two walls of slate and placing the Zoo's luscious foliage plants on Sunday 2/14. The most important piece of this garden goes in on **Monday 2/15** – YOUR ORCHIDS!

PREP YOUR PLANTS

1. *Water your blooming orchids well.* The Convention Center is a very drying environment and very hard on blooming plants. We do make every effort to keep your plants misted throughout the Show.
2. *Stake those bloom spikes.* If any of your bloom spikes or blossoms bounce when you move them about, it's best to stake them, especially for the car trip to/from the Convention Center.
3. *Wipe down the leaves, check for pests.* We want your orchids looking their best for this Show and that includes the leaves. None of your orchid's neighbors want to come away with uninvited guests, so check those leaf undersides and other crevices where bugs love to hide.
4. *Label your plants.* Each orchid should have a clearly written tag with its name and your name. In addition, put your name on a piece of blue Painters Tape (we'll have some at the garden) or use an address label and affix this to the side and bottom of the pot. If you are using a cover pot, be sure the cover pot is also labeled with your name.

We want to make sure that your plants (and cover pots) come back to you!

5. *Make a list.* To help our volunteers keep track of your orchids when dismantling the garden on Sunday 2/15, it helps to have a Master List with your name, contact information, and each plant that you brought to display. (Please print!)
6. *Will you be picking up your plants from the Show or from a member's house?* On this same Master List (#5), please indicate if you will be picking up the plants on Sunday 2/21 teardown? Or will you be picking up the plants from one of the orchid drop spots? Teardown begins at 6 pm on Sunday 2/15 and will probably run to 9 pm.

DELIVER YOUR PLANTS

There are two options for delivering your plants – either deliver them to the Convention Center on **Monday 2/15** until 9 pm OR make use of one of the Member Drop Spots a day or three earlier. Someone will be at the garden from 10:00 am until probably 10:00 pm.

Attached to this article is a map ([WSCC South HCF.pdf](#)) to the Convention Center and its Hand-Carried Freight Elevator. Follow the instructions to the elevator, get your parking ticket validated, get a "Work Pass" sticker to wear, and bring your plants to the 4th Floor. Once off the elevator, walk straight ahead towards the gardens. We are located in the

center of the gardens but closer to the merchant booths just before the Skybridge. Also attached to this article is a map ([2016 Floorplan.pdf](#)) of the gardens and where we are located on the 4th floor.

Member Drop Spots can also be used to deliver your plants **before** Monday 2/15. There are two locations this year – the Grantham's in Lake Forest Park and my place in Shoreline. If you decide to avail yourself of a drop spot, please contact either George Grantham or Joff Morgan before arriving.

PICK UP YOUR PLANTS

The Show ends at 6 pm on Sunday, 2/21. At that time, the orchids are removed from our garden, grouped using that handy printed "Master List" you were so kind to make, and are ready for pick up.

Be sure to wear your "Work Pass" or "Sunday Wristband" to get onto the Convention floor. The Hand-Carried Freight Elevator mentioned previously will be running from 6 pm to well past 10 pm. But we hope to be out of there by 9 pm, so plan to come a bit earlier and help us dismantle the garden.

If you are unable to pick up your plants from the Convention Center, you may opt to get them at a Member Drop Spot. Again, be sure to mark your choice for pick up on your Master List of plants so we know. We've never left any plants behind, but we have had a few plants go home with the wrong owner because someone did not label their plants.

LET'S GO FOR THE GOLD .. AGAIN

With your help and your blooming orchids, we can make an award-winning orchid garden this year. Let's wow the Judges and the Public with a vast array of colorful, interesting blossoms. And get that elusive GOLD medal!

If you have any questions or concerns, please contact me at rastur@eacw.org or by phone/text at 425-269-8383. With your help we are going to create an explosive garden!

~ Joff Morgan

Calling All Volunteers!

First, I want to thank everyone who has already signed up to work a shift (or more) setting up, working at, and/or tearing down our garden at the 2016 NW Flower & Garden Show. We would not be able to do this without your help!

Second, I'd like to encourage the rest of you, those NWOS members who have yet to sign up, to step forward to claim a 2, 3, or 4 hour shift and help your Society. You will get to see the Show for free, help answer orchid-related and Society questions, talk with fellow orchid members, and help provide security for our babies .. er, orchids!

Here are the work shifts that could use one or more helpers:

- WED, 2/17 9:00 am – 12:00 pm 3:00 pm – 6:00 pm 6:00 pm – 8:00 pm
- THU, 2/18 3:00 pm – 6:00 pm 6:00 pm – 8:00 pm
- FRI, 2/19 12:00 pm – 3:00 pm 3:00 pm – 6:00 pm 6:00 pm – 8:00 pm
- SAT, 2/20 9:00 am – 12:00 pm 3:00 pm – 6:00 pm 6:00 pm – 8:00 pm
- SUN, 2/21 9:00 am – 12:00 pm

My plan is to have at least 3 people for each work shift, while the heavier shifts will have 5 and the lighter 6 pm – 8 pm shifts will get by with just 2 people. This allows for frequent

breaks, rotation of duties if desired, and even a trip to the plant vendors to drool over your next acquisition.

WHAT ARE THE DUTIES?

There are mainly two jobs that our volunteers are being asked to fulfill – security and answering questions. Security politely asks people not to sit on the wall and not to touch the flowers. The other job entails helping to answer orchid and Society related questions from the Public. These questions can be as simple as *when do we meet and where*, to the more complex *like how do I get my orchid to bloom* and my personal favorite *is it alright to water with ice cubes*. If you don't know the answer or are the least bit squeamish talking to the Public, there will be more knowledgeable members nearby that you can point to.

HOW DO I SIGN-UP?

If you are interested in signing up, please contact Joff at rastur@eacw.org or by phone/text at 425-269-8383 with your shift requests. **Please state your preferred shift and any alternates.** Wristbands and Setup Stickers will be available at the February 8th General Meeting. If you are not going to be at that meeting, I will mail your wristbands to you. Or we can arrange to meet outside the Show's entrance on the 4th floor of the Convention Center.

Thanks much!

~ Joff Morgan

NW Regional Judging - Jan. 16th

One plant was awarded at the January judging session: a 93-point CCE (Certificate of Cultural Excellence) on the well-flowered *Isabelia violacea* 'Ephemera' - a spherical mass of purple flowers. This plant belongs to Bergen Todd, an AOS judge from Oregon.

The judges were David Edgley (Pacific Northwest Regional Judging Chair); Abigail Chang; Jennifer Ritchie; Bergen Todd; Bill Zimmerman; and Bev Hansen. They examined all of the plants, and only elected to score the one that was eventually awarded. There was much spirited discussion about some of the others. Shown are the plants that were brought in, as well as the AOS judges hard at work doing research from the published references.

A reminder to NWOS members - all are welcome to attend the monthly judging sessions at the Douglass Classroom (attached to the UW Botany Greenhouse in the lower parking lot from where we meet). Doors usually open at 12:30, and judging starts at 1:00. All are welcome - and you are invited to sit in on a judging team as an observer - as long as they are not working on one of your plants at the time!

Mike Pearson

Photos courtesy Mike Pearson.



Judges consult their databases



Plants to be judged



More plants



Judges 1-16-16



CCE award winner *Isabela violacea* 'Ephemera' grown by Bergen Todd

Membership Renewal Reminder

The NWOS fiscal year is July 1 through June 30 so unless you joined recently, it's time to renew. Click [HERE](#) to pay by PayPal on our Membership page. You can also pay at the meeting by cash, check, or debit/credit card. You can mail a check (payable to NWOS) to PO Box 51021, Seattle, WA 98115-1021. New members should complete the [Membership Form](#).

Dues are \$25 for one person or \$30 for two people at the same address. Members who joined at or after the Flower & Garden Show in February are paid through June 2016. Dues are kept low to encourage membership but they cover only a small portion of the society's expenses.

Please contact [Mike Cory](#) for questions about your dues.

Report from the January Meeting

President Abigail Chang welcomed everyone to our special meeting, a live AOS Judging. Joff spoke about the upcoming NWF&G show. Abby reviewed the topics for the next few NWOS meetings. She then told us about a new committee for communication led by Chloë Angus-Tibbetts. Those that would like to help should contact Chloë or any Board member. Abby also called for any volunteers who could help Carolyn bring Library materials to our meetings. George G. announced that we would

be taking a display to the Mt. Baker Orchid Society Feb. 27-28. He would like help with the show as well as our blooming plants to create a beautiful display. New members and visitors were introduced and welcomed.

It was then time for our special American Orchid Society outreach judging. It was held in the center of the room so that we could all observe the fascinating process. The Judges then introduced themselves: David Edgeley (Chair), Jennifer Ritchie, Bill Zimmerman and Abigail Chang.

The judges first went through a screening process. They looked at each and every plant on the display table.



Joff reviews the NWF&G Show Plans

Photos courtesy Diane Drisch.



Judges begin by screening all the options



A full plant table gives them plenty to choose from



Judges carefully consider them all, but here they spot Ellen's Phragmipedium



Judges have their own opinions, but then share them with each other (and us)



As the judges look at all the blooms, they explain their observations

After selecting a couple of plants, it was now time to look them up on the records.

The first plant to be considered was Diane Drisch's *Lycaste Athanacia* (*Lycaste Kurt Servos* x *Lycaste virginalis alba*). The second one was Ellen Macomber's *Phragmipedium* (*Phrag. dalessandroi* x *Conchiferum 'Kay'*).



Lycaste Athanacia



Phrag. (dalessandroi x Conchiferum 'Kay')



Judges hold up the Lycaste for all to see with it's OrchidWiz record on screen.
It shows the genealogical background of the cross.



The judges explain their process while the Orchids Plus® record is on screen.
This shows any previous AOS awards and the analysis of the awarded plant so
that the judges can compare the one before them against any previous ones.



Taking a closer look at the Phragmipedium

Ultimately, after careful consideration, measuring and analyzing, it was decided that though the flowers were quite charming, the judges would not score either plant.

Next, they tackled Steve Dorsey & Lori Lederman's *Stanhopea graveolens* 'Chris Knapp'. For this plant, they decided that it was worth going through the AOS official process to score it. Databases were consulted, measurements were taken and forms were filled in. The judges discussed the finer points and shared with us every step of the way.



The judges begin their deliberations



Computers help compare these flowers to previous awards.



Our members had a good view of the entire proceedings



The judges look at all the fine details.

After the Stanhopea was scored at 79 points, which would have awarded it an HCC at our meeting, a hidden tag was found showing that it had already been awarded in 2012 (and with the same exact score - amazing consistency!). So it became 'the award that almost was'. Though it was a bit disappointing, it shows that the system of analysis and judging works just as it is supposed to work.

Having set up his expert photo area, Mike Pearson went ahead and shot it's portrait as it would have been done had the award been granted. His photos are the three that follow here.



Stanhopea graveolens 'Chris Knapp' HCC/AOS



Stanhopea inflorescence



the hidden tag



Stanhopea plant



A cartload of equipment and expertise
go into this photo shoot



Mike takes the shots

Display Table - We had a very full table at this meeting. Due to the evening's program, we did not review the table. But people had lots of time to wander around and consider all the beautiful blooms.



Cym. Faberi 'Da Xi Pin', Minh Au



Cym. Nut 'Taida' (Cym. sinense x
Cym. Red Beauty),
George & Cylvia Grantham



Cymbidium, Lillian Otani



Cynoches Pineapple Popcorn (Cyc. warszewiczii 'SVO' AM/AOS
x Cyc. Kevin Clarke 'SVO' FCC/AOS, Diane Drisch



Fdk. After Dark 'Sunset Valley
Orchids' FCC/AOS, Minh Au



Fredclarkera (Fdk.) After Dark closeup



Fdk. After Dark 'SVO Black Pearl' FCC/AOS,
Steve Dorsey & Lori Lederman



Den. Super Ise 'White Center' x Den Ise 'Colorful',
George & Cylvia Grantham



Dendrobium nobile,
George & Cylvia Grantham



Den. Princess 'Asai', George & Cylvia Grantham



Den. Red Emperor 'Prince' AM/AOS x
Den. Super Star 'Midnight', Joff Morgan



Colmanara Masai Red,
Joff Morgan



Eria species, George & Cylvia Grantham



NoID, Nancy Wright



Onc. Twinkle Star, Alberto Alvarez



Oncda. Pallas 'Bogachiel' AM/AOS,
Mary Margaret Cromarty



Angraecum Memoria Mark Aldridge,
Allan & Michelle Kaas



Bc Binosa 'Wabash Valley'
(Cattleya bicolor and Brassavola nodosa),
Barb Roberts



Laelia canariensis 'Arial' HCC/AOS,
George & Sylvia Grantham



Laelia finckeniana, George Krasle



Dendrochilum pangasinanense, Lillian Otani



Dendrochilum pangasinanense, George Krasle



Dendrochilum curranii,
Harvey Brenneise



Maxillaria Reichenheimiana,
Steve Dorsey & Lori Lederman



Lycaste Athanacia, Diane Drisch



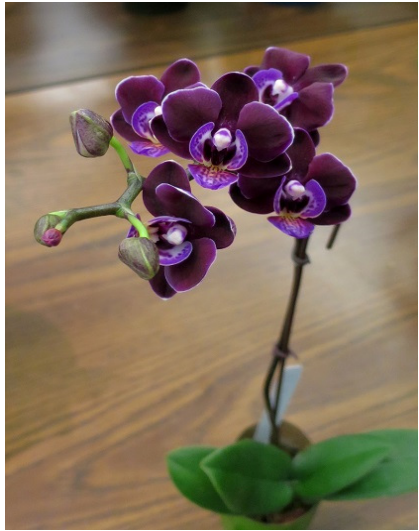
Lycaste ciliata, Allan & Michelle Kaas



Stanhopea graveolens - a bug's eye view from below



Steve & Lori's great *Stanhopea* display



Phal. Younghome Coco, Barb Roberts



Phal. Corona 'Lemon Bomb',
Steve Dorsey & Lori Lederman



Dtps. Chia E. Yenlin Horng Lin, Barb Roberts



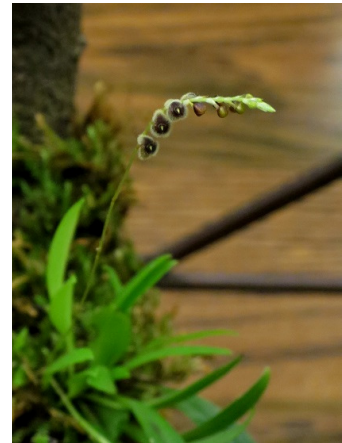
Phalaenopsis, Barb Roberts



Bulb. scabratum,
George & Cylvia Grantham



Bulb. species (poss putidum),
George & Cylvia Grantham



Stelis microchila,
Mary Margaret Cromarty



Restrepia brachypus closeup



Restrepia brachypus, George Krasle



Stenorrhynchos speciosum, Diane Drisch



Stenorrhynchos speciosum closeup



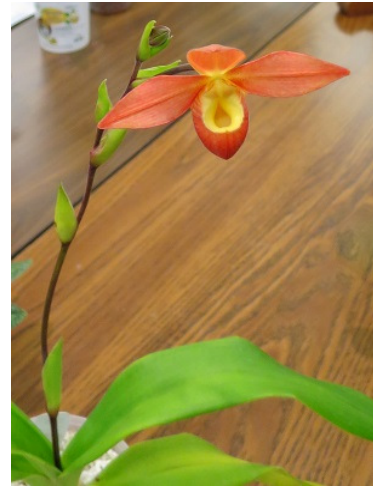
Phrag. Cardinale (*schlimii* x *longifolium*),
Roxanne Rosson



Phrag. Cardinale, Ellen Macomber



Phrag. dalessandroi x Conchiferum 'Kay',
Ellen Macomber



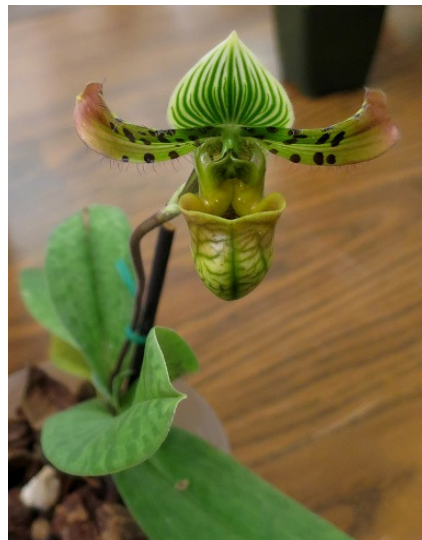
Phrag. Don Wimber (Eric Young x besseae),
Nick Spaulding



Phrag. Court Jester, Mike Foster & Donna Pierce



Paph. Odette's Fantasy, Harvey Brenneise



Paph. venustum, Harvey Brenneise



Paph. venustum, Nick Spaulding



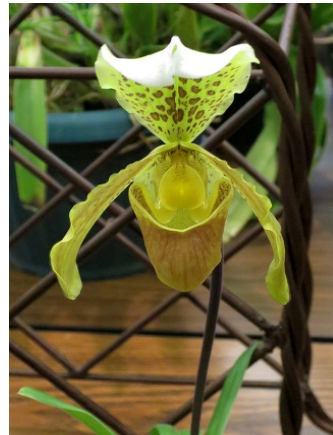
Paph. Nori's Song, Harvey Brenneise



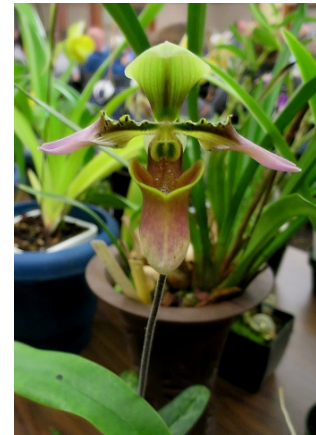
Paph. micranthum, Nick Spaulding



Paph. Fairly Dreamy,
George & Sylvia Grantham



Paph. insigne,
Mary Margaret Cromarty



Paph., from zoo,
Ellen Macomber



Paph. Nike's Sunny Delight, Ellen Macomber



Paph., from zoo repotting, Ellen Macomber



Paphiopedalum, Mary Margaret Cromarty



(Paph. (Makuli - curtisii) x
Paph. Maudiae 'Napa Valley' HCC/AOS) x sib,
Nick Spaulding



Paph. helenae x Holly Green Jem,
Mike Foster & Donna Pierce



Paphiopedalum, George Krasle



Paph. (Winston Churchill cross),
Ellen Macomber



Paph. Great Warrior (Paphiopedilum Great Aunt Mildred
'Red Glory' x Paphiopedilum Sioux 'Swallow' AM/AOS),
Nancy Wright



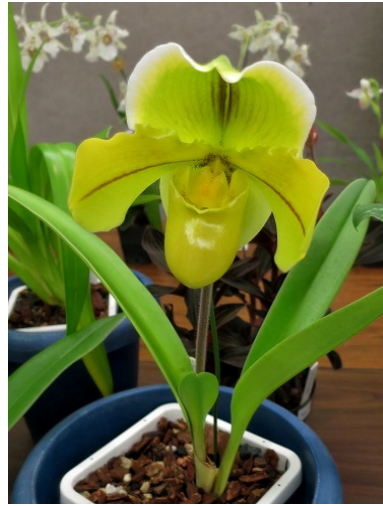
Paph. Oceans of Spots, Mike Foster & Donna Pierce



Paph. Earl of Chester, George Krasle



Paph. Sunbeam, Ellen Macomber



Paph. Harry Stage, Mike Foster & Donna Pierce



Paphiopedilum Nitens



Paph. Starring Puddle, Harvey Brenneise

Schedule of Upcoming Events

Feb. 8, 2016 - NWOS meeting - **Patricia Harding: Name Changes and Taxonomy Rules**

Feb. 17 - 21, 2016 - Northwest Flower & Garden Show, with setup starting Sunday, 2/14

Feb. 20, 2016 - AOS Judging Center, monthly judging, 12:30 pm

March 14, 2016 - NWOS Meeting - Annual Orchid Auction

March 19, 2016 - AOS Judging Center, monthly judging, 12:30 pm

March 21, 2016 - Hands ON Orchid Potting Clinic - Meet in the Lower Douglas Classroom

April 11, 2016 - NWOS meeting

April 16, 2016 - AOS Judging Center, monthly judging, 12:30 pm

May 9, 2016 - NWOS meeting

May 21, 2016 - AOS Judging Center, monthly judging, 12:30 pm

June 13, 2016 - NWOS meeting, Pot Luck Dinner and Gary Baker Service Award

June 18, 2016 - AOS Judging Center, monthly judging, 12:30 pm

July 16, 2016 - AOS Judging Center, monthly judging, 12:30 pm

August 20, 2016 - AOS Judging Center, monthly judging, 12:30 pm

Reminder for Officers & Board Members

The schedule of Board Meetings for this fiscal year is: 3/8/16, 5/3/16. Meet at 7 p.m. at Mike Cory's house unless notified that it's been moved elsewhere.

Shopping on Amazon? Use this link to Earn \$\$ for NWOS

If you go to <http://smile.amazon.com> and sign in to your account, you'll be given information about supporting various non-profits. You can type in "Northwest Orchid Society" and it will then send .5% of your purchase price to the organization.

It's really easy, but you have to remember to go in through the '[smile](#)' subdomain when you place the order, otherwise it will go through as a regular order.

Special Announcements

No special announcements this month.