



NORTHWEST ORCHID NEWS

Current Newsletter

February 2015

Volume 68, Issue 8

News Archive

Upcoming Events

Volunteer Opportunities

Advertising

NWOS Library

NWOS Contacts

Fall AOS SHOW 2014

Want something printed in the newsletter? E-mail it to nwos_news@nwos.org no later than the 25th of the month.

- [About the February Meeting](#)
- [Panel Discussion: Orchid Basics](#)
- [President's Corner](#)
- [Calling All Orchids](#)
- [Calling All Volunteers](#)
- [Flower Show Orchids for Sale](#)
- [Get Ready for the Annual Orchid Plant Auction](#)
- [Orchid Show and Sale at Volunteer Park Conservatory](#)
- [Report from the January Meeting](#)
- [Schedule of Upcoming Events](#)
- [Reminder for Officers & Board Members](#)
- [Special Announcements](#)

About the February Meeting

February 16, 2015

7:00 p.m.

University of Washington
Center for Urban Horticulture
3501 NE 41st Street
Seattle, WA 98105

Panel Discussion: Orchid Basics

Our February meeting will be a Q&A session directed at a panel of some of our society's more experienced orchid growers. There are always several new members and guests that attend the meeting immediately following the Northwest Flower & Garden Show. We

thought that this would be a good way to welcome these newcomers, introduce them to the Society, and give them the opportunity to gain some basic orchid knowledge. And it should also be a good review for us all, since so many of us are at different stages of know-how.

We hope that this will be a wide-ranging discussion, but we would in particular like to concentrate on the 'basics' of orchid culture and care. In addition, we'll provide information about the workings of our Society.

The panel will be a starting point. Please bring your own experiences and knowledge of orchids to help everyone. Newcomers and regulars alike should feel free to ask questions and share. With a big, friendly smile, lots of great information, our usual great camaraderie and a Display Table of beautiful blooms, we can present a good first impression to our new friends and members!

Display Table:

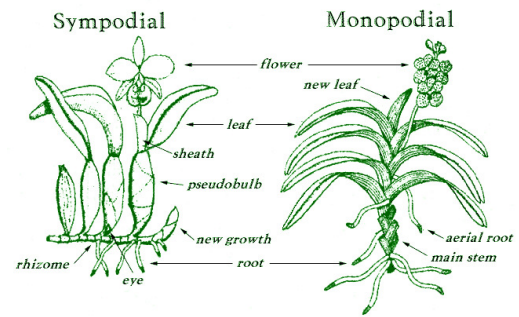
We will have our regular display table, so bring your blooming plants to share.

Sales Table:

Members may bring up to 10 plants to sell. Include an extra tag with your name and the price in the plant.

Raffle:

The raffle will be held as usual. Win a new orchid for your collection while supporting the Scholarship Fund.



American Orchid Society drawing of the 2 main orchid plant growth types

NWOS Library:

If you'd like to check out a book or tape from our Library, please contact our Librarian [Carolyn Mann](#) a minimum of 2 weeks before the next meeting. For a list of library items Click [HERE](#) or click on the link at the top of this page.

President's Corner

This is the time of year that we all need to be thinking about how to help our society. I want to thank everyone who volunteered to work at the Flower Show. Let's hope that all the hard work impressed the judges for the coveted Gold Medal.

It is also time to consider becoming a trustee or officer for the NWOS Board. The trustees and officers meet every other month to keep the society moving in a forward direction. Without them the society would not be able to function.

If you have any questions about these positions, please contact Alycia or me at the upcoming meeting.

Thanks,
Mike Foster, President

Calling All Orchids

The 2015 NW Flower & Garden Show is upon us! The time to show off your best, longest lasting blossoms is now! Stake those flower stems, preen those leaves, and label those pots. We need your blooming orchids to show off their stuff in "**Lettre d' Amor orchid**", our NWOS orchid garden designed by Joe Griener.

Here's what the www.gardenshow.com website has to say about our display:

The singular beauty of orchids is spotlighted in this private space where lovers met, parted and ventured back alone to reminisce. Orchids cling to rocky crevices and grow among tree branches...as they bloom in the tropical breeze, it's hard not to fall in love!

Several types of orchids—growing on the ground and among the trees and rocks as they do in nature—are showcased in this display.

This garden dreamscape reflects the passion of orchid growers and enthusiasts from all walks of life. Over 30 volunteers have collaborated in creating this garden, and the plants come from the personal collections of Northwest Orchid Society members.

Curious about growing these delicate beauties for your own enjoyment? Knowledgeable members of the society are on hand to answer your questions.

"Take-home ideas" for your own garden: Orchid varieties for NW gardens; growing in your home or greenhouse

As you can see from the description, we have much to live up to! All blooming orchids are needed to help fill this 680 square foot garden. NWOS volunteers will be busy laying the garden's wood foundation on Saturday 2/7. Laying stone and brick and foliage plants on Sunday 2/8. BUT the most important piece of this garden goes in on **Monday 2/9** .. you guessed correctly .. YOUR ORCHIDS!

PREP YOUR PLANTS

1. Water your blooming orchids well. The Convention Center is a very drying environment and very hard on blooming plants. We do make every effort to keep your plants misted throughout the Show.

2. Stake any floppy bloom spikes. If any of your bloom spikes or blossoms are floppy, it's best to stake them, especially for the car trip to/from the Convention Center.
3. Wipe down the leaves, check for pests. We want your orchid looking its best for this Show and that includes its leaves. And none of your orchid's neighbors want to come away with uninvited guests, so check the leaves' undersides and other crevices where bugs love to hide.
4. Label your plants. Each orchid should have a clearly written tag with its name. In addition, put your name on a piece of blue Painters Tape or use those address labels and affix this to the side or bottom of the pot. If you are using a cover pot, be sure the cover pot is also labeled with your name.
5. Make a list. To help our volunteers keep track of your orchids when dismantling the garden on Sunday 2/15, it helps to have a Master List with your name, contact information, and each plant that you brought to display. (Please print!)
6. Will you be picking up your plants from the Show or the Meeting? On this same Master List (#5), please indicate if you will be picking up the plants on Sunday 2/15 teardown? Or will you picking up your plants from the NWOS Meeting on Monday 2/16? Teardown begins at 6 pm on Sunday 2/15 and will probably run to 9 pm.

DELIVER YOUR PLANTS

There are two options for delivering your plants – either deliver them to the Convention Center on **Monday 2/9** until 8 pm OR make use of one of the Member Drop Spots a day or three earlier.

Attached by clicking [HERE](#) is a map to the Convention Center and its Hand-Carried Freight Elevator. Follow the instructions to the elevator, get your parking ticket validated, get a "Work Pass" sticker to wear, and bring your plants to the 4th Floor. Once off the elevator, walk straight ahead into the Merchant Booth area. Keep to your left as you locate the "200" row and then turn right and head for the floor-to-ceiling column in front of you. Our garden is just past that column. Click [HERE](#) to download a map of the gardens. (For those who delivered plants and/or volunteered previously, we are very close to the South Atrium doors and where we were last year.)

Member Drop Spots can also be used to deliver your plants **before** Monday 2/9. There are two locations this year – the Grantham's in Lake Forest Park and my place in Totem Lake/Kirkland. If you decide to avail yourself of a drop spot, please contact either George Grantham or Joff Morgan (our numbers and addresses are in your NWOS Roster) before arriving.

PICK UP YOUR PLANTS

The Show ends at 6 pm on Sunday, 2/15. At that time, the orchids are removed from our garden, grouped using that handy printed "Master List" you were so kind to make, and are ready for pick up.

Be sure to wear your "Work Pass" or "Sunday Wristband" to get onto the Convention floor. The Hand-Carried Freight Elevator mentioned previously will be running from 6 pm to well past 10 pm. But we hope to be out of there by 9 pm, so plan to come a bit earlier and help us dismantle the garden.

If you are unable to pick up your plants from the Convention Center, you may opt to get them at the **NWOS Meeting on Monday 2/16**. Again, be sure to mark your choice for pick up on your Master List of plants so we know. We've never left any plants behind, but we have had a few plants go home with the wrong owner because someone did not label their plants.

LET'S GO FOR THE GOLD

With your help and your blooming orchids, we can make an award-winning orchid garden this year. Let's wow the Judges and the Public with a vast array of colorful, interesting blossoms. And get that elusive GOLD medal!

If you have any questions or concerns, please contact me at rastur@eacw.org or by phone/text at 425-269-8383. With your help we are going to create another dynamite garden!

~ Joff Morgan

Calling All Volunteers

First, I want to thank everyone who has already signed up to work a shift (or more) setting up, working at, and/or tearing down our garden at the 2015 NW Flower & Garden Show. We would not be able to do this without your help!

Second, I'd like to encourage the rest of you, those NWOS members who have yet to sign up, to step forward to claim a 2, 3, or 4 hour shift and help your Society. You will get to see the Show for free, help answer orchid-related and Society questions, talk with fellow orchid members, and help provide security for our babies .. er, orchids!

Here are the work shifts that could use (at least) one more helper:

- WED, 2/11 6:00 pm – 8:00 pm
- FRI, 2/13 9:00 am – 12:00 pm 3:00 pm – 6:00 pm 6:00 pm – 8:00 pm
- SAT, 2/14 9:00 am – 12:00 pm 6:00 pm – 10:00 pm

My plan is to have at least 3 people for each work shift, but some of the heavier shifts (like Friday morning and Saturday) will have 5 people per shift. This allows for frequent breaks, rotation of duties if desired, and even a trip to the plant vendors to drool over your next acquisition.

WHAT ARE THE DUTIES?

There are mainly two jobs that our volunteers are being asked to fulfill – security and answering questions. Security politely asks people not to sit on the wall and not to touch the flowers. The other job entails helping to answer orchid and Society related questions from the Public. These questions can be as simple as *when do we meet and where*, to the more complex *like how do I get my orchid to bloom* and my personal favorite *is it alright to water with ice cubes?* If you don't know the answer or are the least bit squeamish talking to the Public, there will be more knowledgeable members nearby that you can point to.

HOW DO I SIGN-UP?

If you are interested in signing up, please contact Joff at rastur@eacw.org or by phone/text at 425-269-8383 with your shift requests. **Please state your preferred shift and any alternates.** I can either mail your wristbands if there's enough time or we can arrange to meet outside the Show entrance. I hope to hear from you!

~ Joff Morgan

FLOWER SHOW ORCHIDS FOR SALE

One of the "perks" of putting in a garden at the NW Flower & Garden Show is we get a stipend to purchase additional blooms (orchids) to make our garden more colorful.

These extra orchids will be available for SALE at the **February 16th Meeting** at very attractive prices.



SEDUM TILES



We are again making use of *Sedum Tiles* provided by Etera, Mt. Vernon, WA (www.etera.com). Each tray (approximately two square feet) is planted with 6 to 8 different varieties of Sedum that all stay about the same height, provide an interesting variety of foliage colors, and bloom from March through Fall. These make an attractive and durable year-round groundcover for your yard or patio. The variety being used this year is "Color Splash", this is very similar to "Color Max" on their website.

Excess tiles will be available at the February 16th meeting for \$10 per tray.

Get Ready for the Annual Orchid Plant Auction

Remember that the March meeting is our annual plant auction. Start looking now for plants to sell and saving for plants to buy. If you sell a plant, you'll have both room and money to add to your orchid collection. So check for duplicates, overgrown items in need of dividing and repotting as well as plants that just don't appreciate your growing conditions. Let's have the best ever event.

The Orchid Auction is either the only or a significant source of income for many of the NWOS Funds. Members may bring up to five plants each to auction off (NWOS takes a 20% commission) and as many as you wish for a 100% donation to the Society.

The Library Fund is used to purchase items for the NWOS Library.

The Slipper Fund is used by the UW Botany Greenhouse to purchase Species Orchids.

The Zoo Fund is used by the Woodland Park Zoo Greenhouse to purchase Orchids.

The Scholarship Fund is used each year for a college student working on a Orchid related project.

The General Fund covers everything else, from the programs to the everyday working of your society.

Orchid Show and Sale at Volunteer Park Conservatory

The Northwest Orchid Society, in collaboration with the Friends of the Conservatory and Conservatory staff, will be hosting an orchid show and sale at the Conservatory in Volunteer Park on Capitol Hill. The show will be from 10 AM until 4 PM on Saturday, April 4th 2015.

The Conservatory has just completed a 3 million dollar restoration and was reopened in December. It is FREE ADMISSION DAY to the Conservatory as well as the Seattle Asian Art Museum. The Friends of the Conservatory will be there to answer questions and give Conservatory tours.

Location: Volunteer Park Conservatory, 1400 East Galer St., Seattle, WA
April 4, 2015 10am - 4 pm

Report from the January Meeting

2nd Vice President George Grantham opened the meeting by welcoming new members and visitors and had them introduce themselves. Joff Morgan gave an update on our Garden display at the upcoming NWF&G Show. He set out sign-up sheets for various shifts before, during and at the end of the show. Alycia Moncrieff is heading up the Nomination Committee and needs people to consider volunteering for several key positions. Mike Cory reported that we currently have 101 members.



Abigail Chang gave a beautiful slide show of the 2013 AOS Award winners from orchid societies throughout the Pacific Northwest as well as a few from South America. Abby is an AOS judge so it was good hear her perspective on the award recipients. Thanks also to all the photographers whose skills allowed us to experience these special flowers.



Abigail Chang

Andy Wright reviewed the plant table. Photos courtesy Diane Drisch.



Andy Wright



a nice full crowd



Paph. gratrixianum 'Wedgwood'
AM/AOS, Dick Hanson



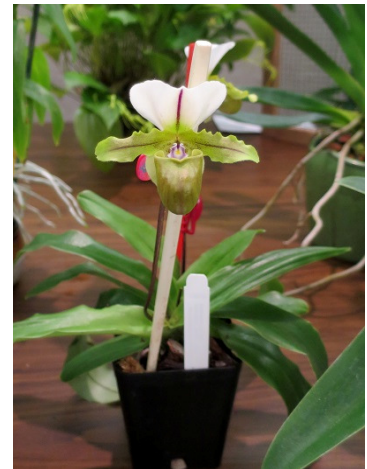
a nice full plant table



Paph. Funnel 'Corjo'
x Paph. Hellas FCC/RHS,
Al and Michelle Kaas



Paph. Deceptively Venus
(Double Deception 'Double Up' x
venustum 'Blatant'),
Harvey Brenneise



Paph. spicerianum
(spicerianum 'Taiwan Truffle' x
spicerianum 'Fat Boy'),
Al and Michelle Kaas



Paph. Prime Child,
Harvey Brenneise



Paph. victoria-mariae closeup



Paph. victoria-mariae,
Dick Hanson



Paph. Streathamense Wedgwood
AM/AOS
(P. lawrenceanum x P. fairrieanum),
Dick Hanson



Paph. fairrieanum,
Dick Hanson



Paph. fairrieanum album
'Havice Creek' x self,
Ellen Covey



Paph. Sunbeam,
Al and Michelle Kaas



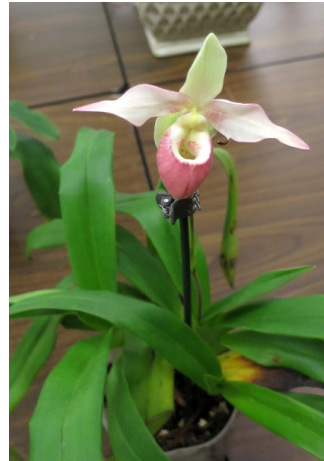
Paph. Dellaina, Dino Taroco



Paph. (poss. grande),
Joff Morgan



Phrag. Allison Strohm
(kovachii 'Laura' x Living Fire 4N),
Joff Morgan



Phrag. Cape Sunset,
Harvey Brenneise



Phragmipedium Fireworks
(Grande 4N 'Piping Rock'
HCC/AOS x pearcei 'Jenna'),
Ron Goodfellow



Laelia gouldiana,
George Krasle



Laelia finckeniana
(natural hybrid of L. anceps x L.
albida), George Krasle



Laelia rupestre
(syn. L. crispata),
Dick Hanson



Blc. (Wattana Gold x Orange Nugget)
x Blc. Malworth 'Orchidglade' FCC/AOS,
Ellen Covey



Blc. hybrid,
Gordon Cromwell



Pot. Dream Circle (Blc Hisako Akatsuka
'Volcano Queen' HCC/AOS
x Slc. Circle of Life 'Artistry'),
Jeanne McKinnie



Sophranitis coccinea
(syn. *Cattleya coccinea*),
Dick Hanson



Cycnoches,
Dino Taroco



Cym. Enzan Forest 'Majolica',
Diane Drisch



Lycaste lasioglossa,
Gordon Cromwell



Maxillaria molitor closeup



Maxillaria molitor,
Andy Wright



Ludisa discolor,
George Krasle



Stenorrhynchos speciosum closeup



Stenorrhynchos speciosum,
Diane Drisch



Dendrochillum bicalliosum,
Andy Wright



Dendrochillum glumaceum closeup



Dendrochillum glumaceum,
George Krasle



Onc. ornithorhynchum,
ancestor or Twinkle and Sharry Baby,
George Krasle



Onc. Twinkle,
George Krasle



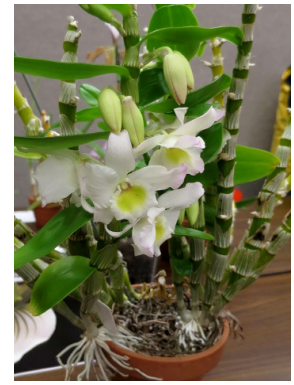
Onc. Twinkle,
Alberto Alvarez



Bardendrum Nanboh Pixy
'Cherry Moon',
Al and Michelle Kaas



Dgmra. Winter Wonderland
'White Fairy', George Krasle



Den. Sea Mary 'Snow King',
Ellen Covey



Dendrobium Micro Chip
(aberrans x normanbyense),
Harvey Brenneise



Dendrobium Gillian Leaney '#2'
x Den Ku-ring-gai 'Bobin',
Ellen Covey



Dendrobium Royal Wings
(Roy Tokunaga x Silver Wings),
Ron Goodfellow



Bulbophyllum helenae,
Andy Wright



Bulbophyllum helenae closeup



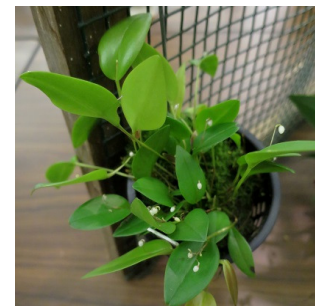
Bulbophyllum dolichoglottis,
Andy Wright



Pleurothallis grobyi type,
Ellen Covey



Pleurothallis niveoglobula,
Ellen Covey



Pleurothallis niveoglobula,
Andy Wright



Pleurothallis phalangifera,
Andy Wright



Pleurothallis loranthophylla,
Andy Wright



Pleurothallis adalae,
Ellen Covey



Neolauchia pulchella,
Ellen Covey



Pleurothallis dilemma,
Ellen Covey



Scaphosepalum swertifolium,
Andy Wright



Scaphosepalum decorum,
Andy Wright



Phal. equestris,
Dick Hanson



Phal. hybrid,
Michael Sheeran



Ascocentrum pusillum,
Al and Michelle Kaas



Angraecum Memoria Mark Aldridge,
Al and Michelle Kaas



Aerangis disticta,
Ellen Covey



Angraecum Crestwood 'Tomorrow Star' SM/WOC
(Angr. sesquipedale x Angr. veitchii),
Gordon Cromwell



Angraecum Crestwood 'Tomorrow Star' SM/WOC
(Angr. sesquipedale x Angr. Veitchii),
Al and Michelle Kaas

Schedule of Upcoming Events

Feb. 11-15, 2015 - Northwest Flower & Garden Show. Setup days are Feb. 7-9 and part of the 10th. The Show starts Wed. 2/11 and goes thru Sunday 2/15.

Feb. 16, 2015 - NWOS Meeting - Orchid Basics Panel Discussion...one week later than normal because of the NWF&G Show setup on our regular meeting date.

March 9, 2015 - NWOS Meeting - Annual Orchid Auction

March 16, 2015 - Hands-**ON** Orchid Potting Clinic - Meet in the Lower Douglas Classroom

April 4, 2015 - Orchid Show and Sale, Volunteer Park Conservatory, 10:00 am - 4:00 pm

April 13, 2015 - NWOS meeting - Larry Moscovitz, topic TBD

May 11, 2015 - NWOS meeting - Mary Gerritson: Miniature Orchids

June 8, 2015 - NWOS meeting, Pot Luck Dinner and Gary Baker Service Award

Reminder for Officers & Board Members

The schedule of Board Meetings for the rest of this fiscal year is: 3/3/15 & 5/5/15. Meet at 7 p.m. at Mike Cory's house unless notified that it's been moved elsewhere.

Special Announcements

No special announcements this month.